

oransi
V-hepa Pro Air Purifier
The complete air purifier



OVHPR0201

Table of Contents:

Safety Instructions.....	1
Control Panel and LCD Display	2
Know Your Air Purifier.....	4
Operating Instructions.....	6

Safety Instructions:

WARNING: RISK OF ELECTRICAL SHOCK

Safety precautions should always be used when operating this or any electrical appliance.

Decrease the risk of electrocution, electric shock, injury or fire by reading and following all of the warnings below.

To reduce the risk of electric shock, do not attempt to service the air purifier in any way other than to replace or clean the air filter.

Read all instructions before operating the air purifier.

This product operates at 115V AC, 60Hz only.

Do not run the power cord under carpets, and do not cover with throw rugs.

This product is not intended to filter oil or grease from air.

Always unplug the power cord from the electrical outlet when the air purifier is not in use or when changing the filter.

Never run the air purifier unless it is fully assembled.

Do not alter the plug in any way.

Always turn the manual control knob to the off position before unplugging the air purifier from outlet.

Do not place the cord near a heated surface.

Never operate the air purifier if the plug or cord is damaged or appears

damaged. Only qualified service personnel should ever replace or attempt to replace a damaged power cord.

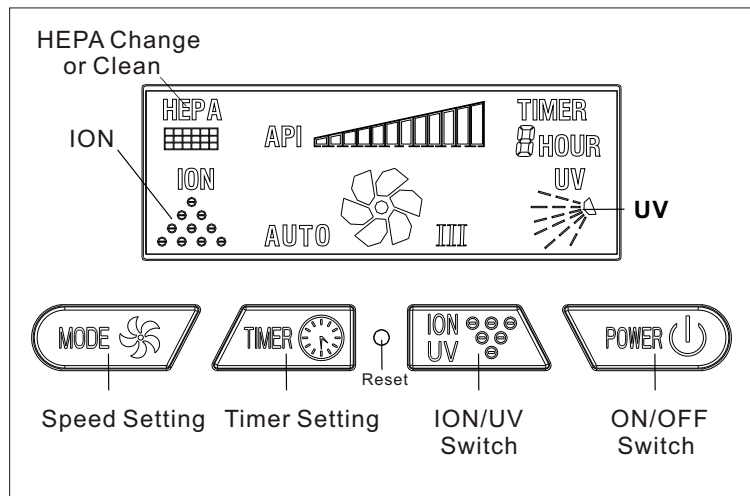
Never use the power cord to pick up, carry, drag, pull, or lift the air purifier. Do not pull the cord against or around sharp corners and edges. Always remove the plug from its power outlet by holding onto the plug itself and pulling gently.

Never pull on the cord itself to unplug it from its power outlet.

Use care when operating the air purifier by keeping all foreign objects, fingers, body parts, hair, loose clothing and jewelry away from openings.


Never touch the air purifier or its plug when your hands are wet.

Control Panel and LCD Display:

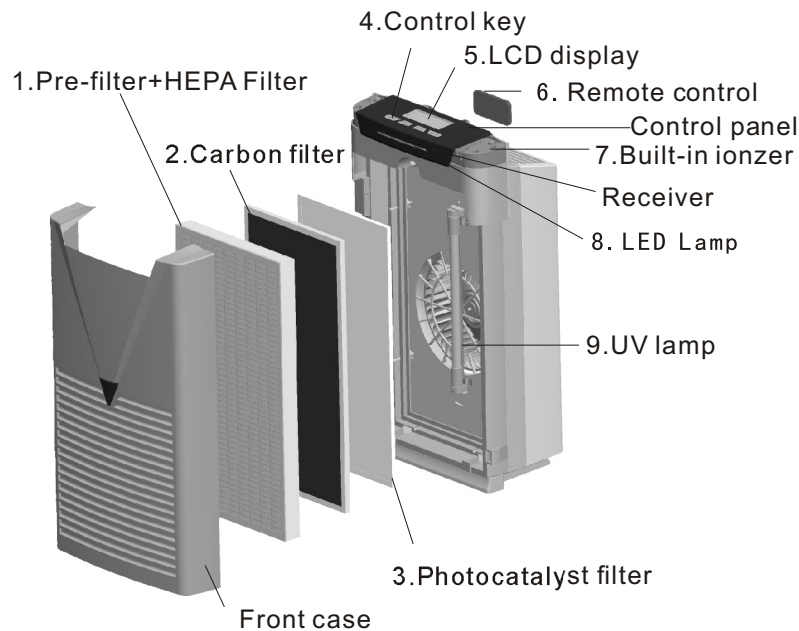


1. Before operating the air purifier, make sure the air filters inside the air purifier are not wrapped in plastic. When the air purifier is plugged in you should hear a beep. Press the Power button to turn it on. If the air purifier does not power on, ensure the front cover is installed correctly. See the How to Use section for more information.

2. The v-hepa Pro air purifier has 3 fan speeds and auto mode. The fan speeds are represented by Roman numerals (I, II, III). By pressing the mode button you will cycle through the fan speeds and auto mode as follows: I - II - III - Auto.

3. Press the Timer button to initiate the count down timer. Pressing the timer button will cycle through the countdown timer settings (in hours). The settings are 1 hour, 2 hours, 4 hours, 6 hours, 8 hours, off.
4. When the air purifier is turned on, the UV lamp and negative ionizer will be on and the LCD display will show movement in the UV and ion sections. Press the Ion/UV button to turn this feature off. If the Ion/UV display is showing with no movement on the LCD, it is an indication that the UV lamp requires replacement or adjustment.
5. When the air purifier is in the Auto mode, the fan speed of the air purifier will be automatically controlled depending upon the reading of the API. The API shows the air quality in your room based upon a reading from the dust sensor that is located on the left side of the air purifier. The API will display more bars to indicate higher particle levels. Higher readings in the API will result in the air purifier operating at a higher fan speed.
6. Reset operation. The v-hepa Pro has a filter replacement indicator to remind you when it is time to check and/or replace the HEPA filter. When you see  displayed beneath the HEPA label on the LCD display it is time to check the filter. To reset the filter replacement indicator, press the Reset button with a paperclip or safety pin.

Functions:



1. Washable pre-filter to capture large particles such as dust. HEPA filter to remove microscopic particles down to 0.3 microns in size such as fine dust, smoke, pollen, bacteria and mold.
2. The activated carbon filter consists of a vast system of highly adsorbent molecular sized pores to remove gases, odors and VOC' s (volatile organic compounds).

3. Photocatalyst filter (TiO₂): Photocatalytic oxidation is achieved when you combine UV rays with a Titanium Dioxide (TiO₂) coated filter. This process creates hydroxyl radicals that remove harmful gases and VOC' s (volatile organic compounds) such as formaldehyde, ammonia and many other common contaminants that are released by building materials, household cleaners, particle boards and carpeting.

4. Control key: User interface for Fan speed, Timer UV/Ion, and power.
5. LCD display that shows the settings of the air purifier.
6. Remote control and remote control storage.
7. Low level and ozone safe negative ionizer to freshen and balance the air (ie neutralize a surplus of positive charges from TV' s and computer monitors).
8. Air quality indicator: LED light that changes color depending upon air quality in your room. Blue is best, Green means a higher level of particles and Red means a high level of particles.
9. UV-C lamp. Ultraviolet light possesses just the right amount of energy to break organic molecular bonds. As microorganisms pass by the UV rays this bond breakage translates into cellular or genetic damage to microorganisms such as germs, viruses and mold resulting in their destruction.

Easy operating instructions:

- 1.Plug it in
- 2.Turn it on (be sure to remove any bags from the filters inside the air purifier)
- 3.Breathe easier

Note: If the air purifier does not turn on when the knob is turned check to make sure:

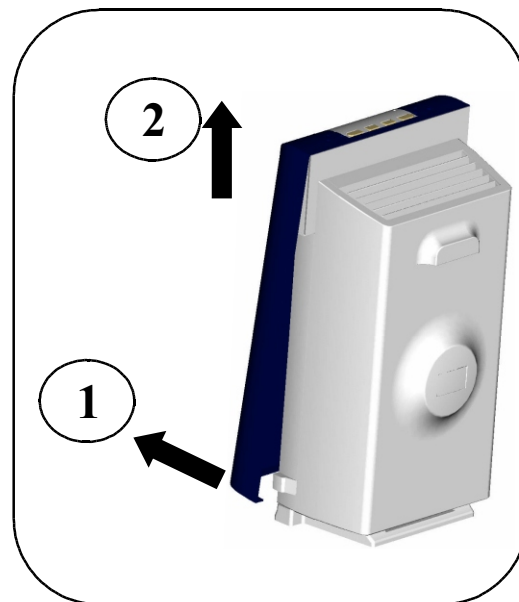
- 1.You have power to your electrical outlet.
- 2.The filter is installed and the front cover of the air purifier is correctly installed. There is a safety mechanism that prevents the air purifier from powering on if the either the filter or cover are not properly installed.

Assembly and Maintenance:

- 1.The washable pre-filter can be separated from the HEPA filter and cleaned with water or a low level suction vacuum cleaner. This is suggested every couple months if you have pet hair or above average dust levels.
- 2.The HEPA filter and the carbon filter cannot be washed and the filters will be damaged if they become wet.
- 3.If the air purifier begins to make a noise like the motor is straining due to increased air flow resistance it is best to replace the HEPA filter since the air flow through the air purifier is being greatly reduced.

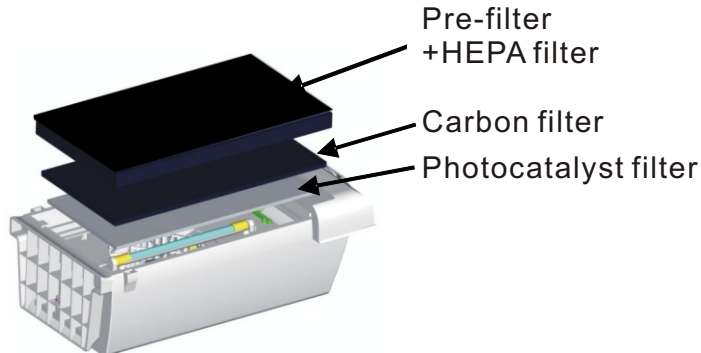
How to Remove the Cover:

- 1.Make sure the air purifier is turned off and unplugged.
- 2.There is a plastic latch on both sides of the cover near the bottom that locks the cover to the air purifier. Grab the cover at the plastic latch and pull out and then toward you as shown below. It may help to look for the black latch as it is easier to open when you pull from that location. Once the lower section is unlatched, push the cover up to remove it from the air purifier.

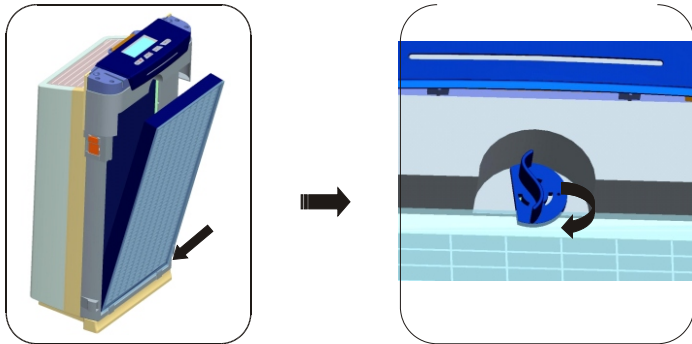


Filter Position Sequence (from the bottom up):

Photocatalyst filter – Carbon filter – HEPA+Pre-filter.
The good news here is that there is only one way to put each of these filters into the air purifier since there is an opening sized for each.

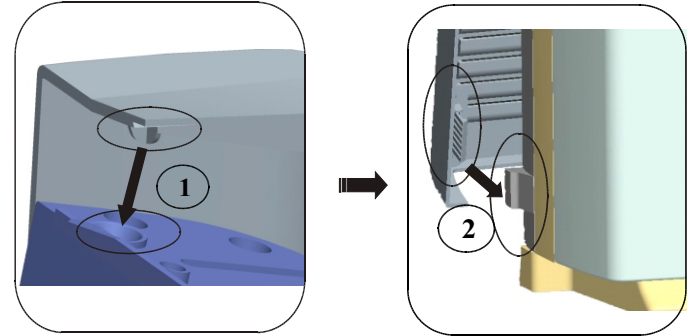


Filter Lock: After all of the filters have been installed, turn the filter lock to secure them in place. Ensure the black pre-filter is the top filter.



How to attach the cover:

Insert the knob on either side of the front cover into the notches that are in the top of the air purifier as shown below. Then swing the bottom of cover toward the air purifier until the latches on either side lock into place.



UV Lamp

1. Caution – do not touch the glass part of the lamp. Oil from fingertips will decrease the effectiveness of the lamp.
2. To remove the lamp, ensure the air purifier is unplugged and the UV lamp has been off for at least 15 minutes. Remove the front cover and all of the filters. Hold the white ceramic ends of the UV lamp and turn 90 degrees counter clockwise.
3. To install the lamp, hold the white ceramic ends, insert the copper pins into the UV lamp assembly and turn 90 degrees clockwise. Reinstall the filters and close the front cover.



Assemble the UV Lamp



Remove the UV Lamp